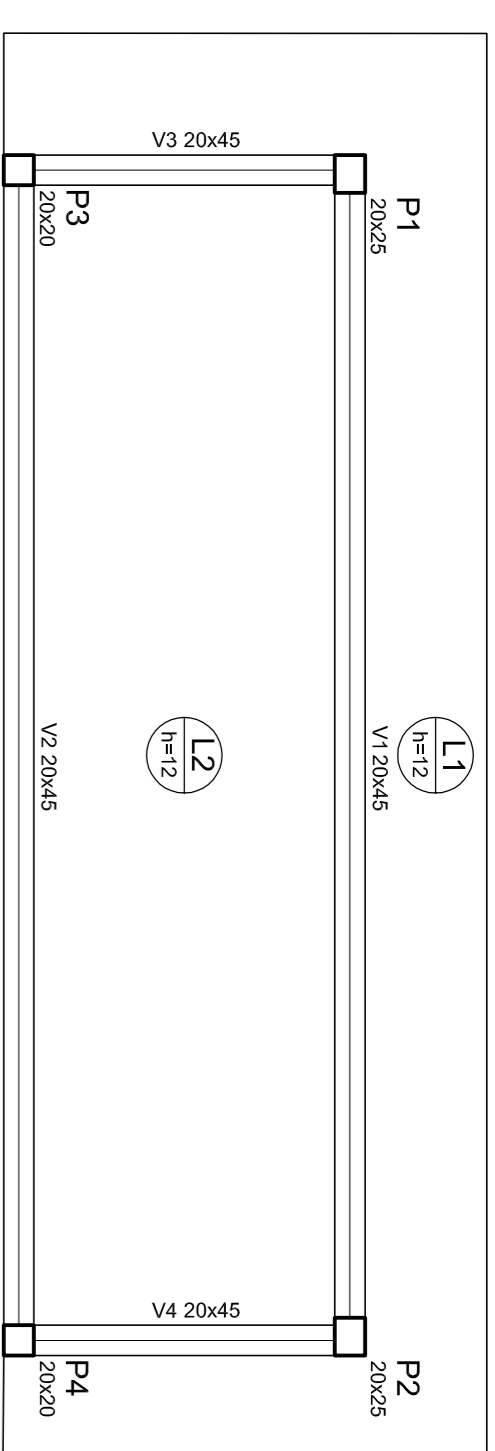
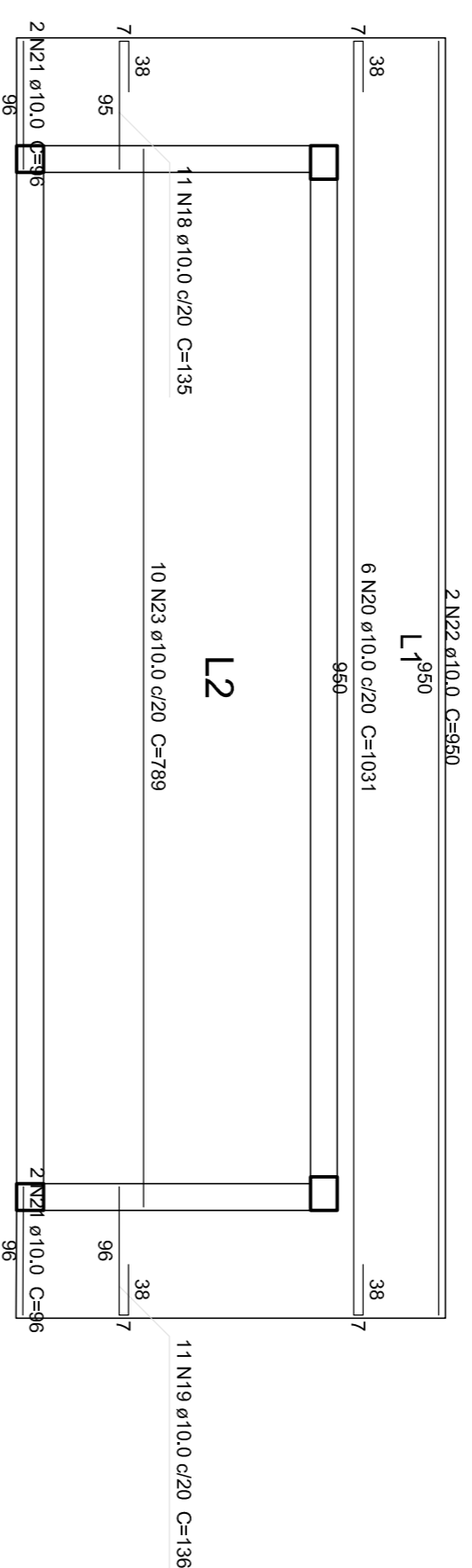


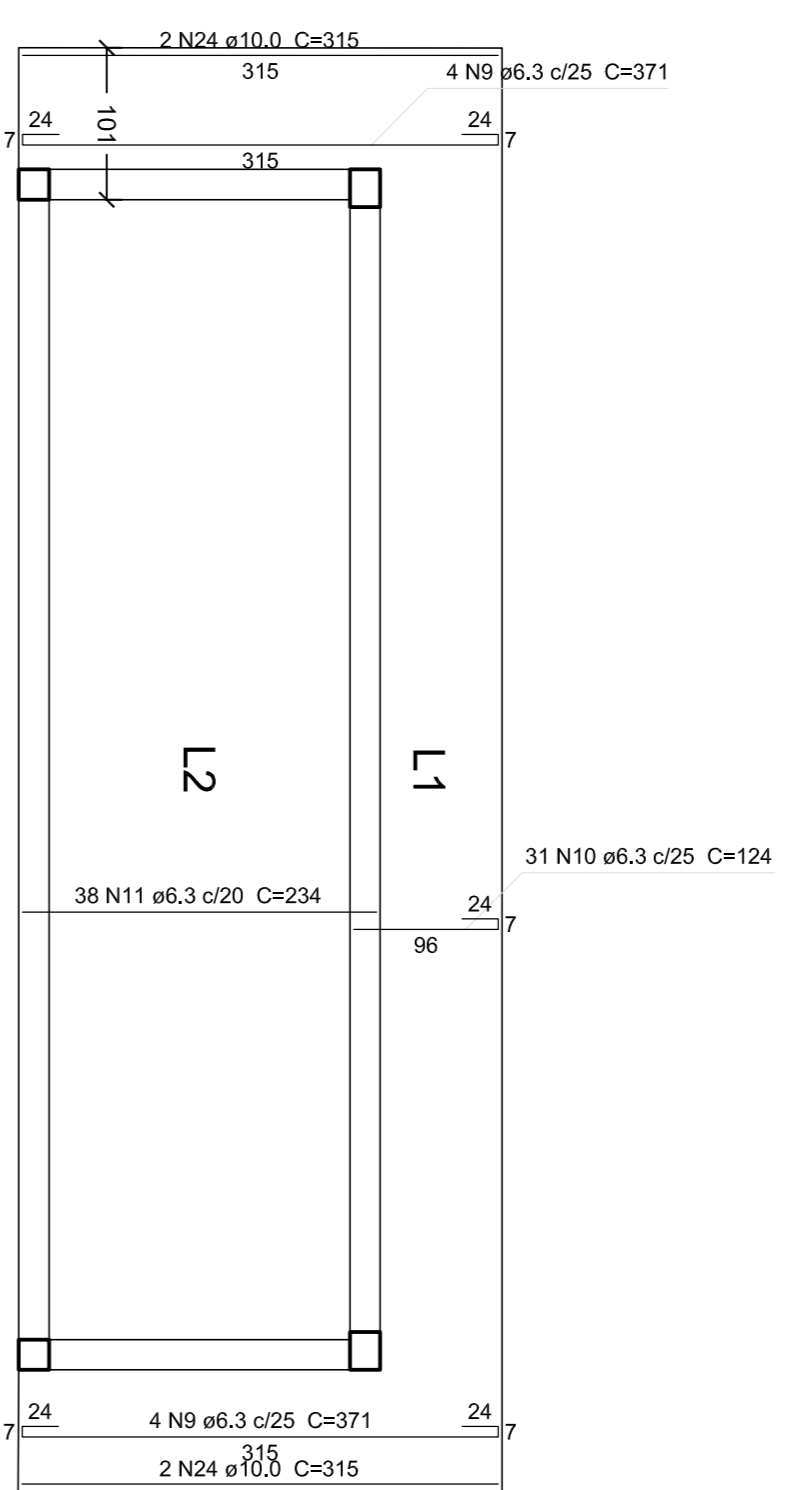
FORMA - BALDRAME
Escala 1:50



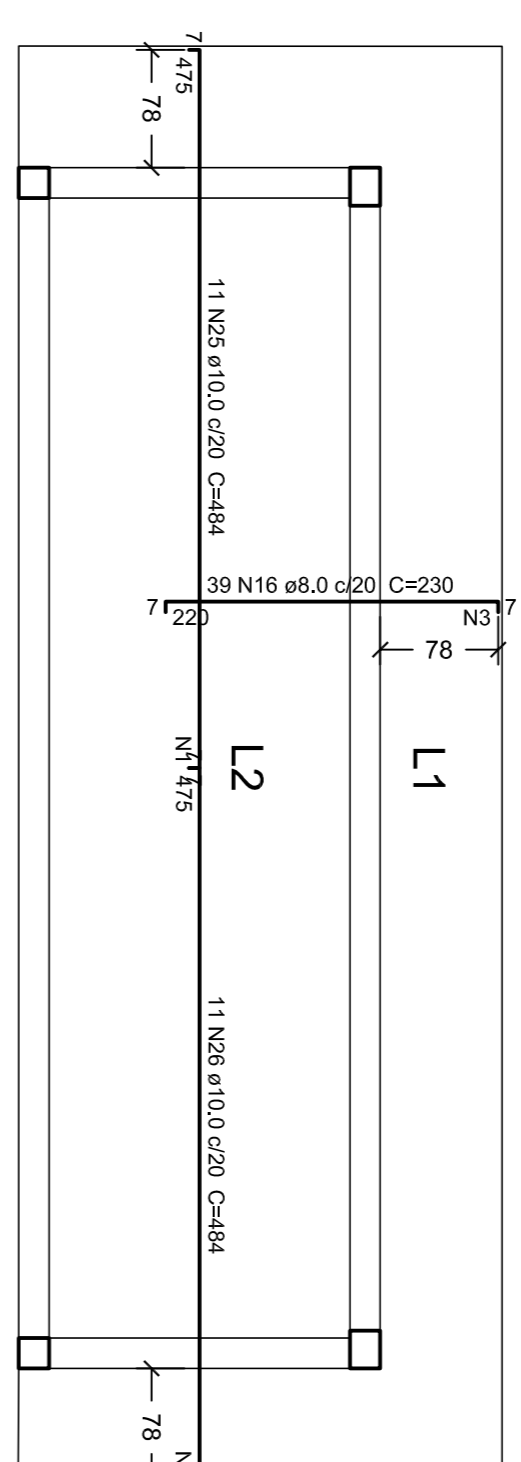
FORMA - COBERTURA
Escala 1:50



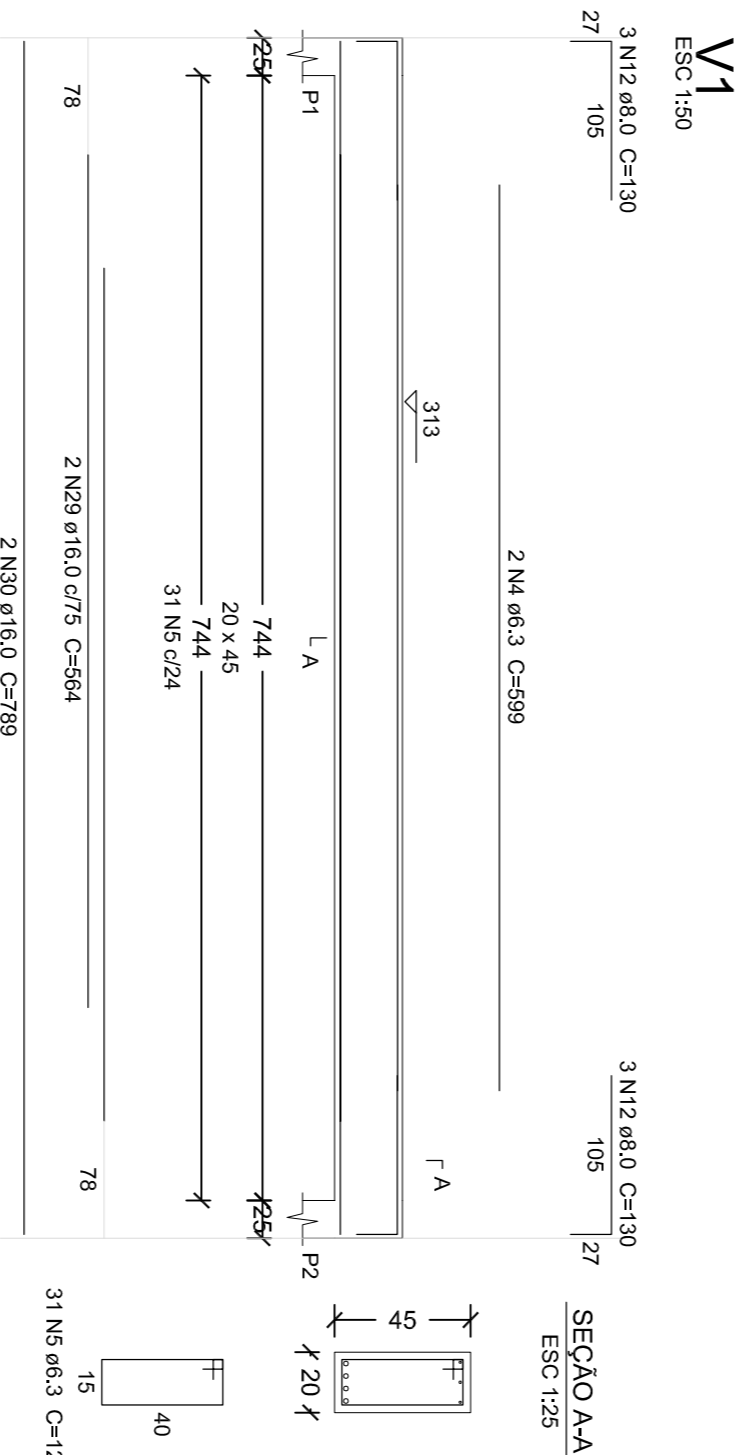
ARMAÇÃO POSITIVA DAS LAJES (EIXO X)
Escala 1:50



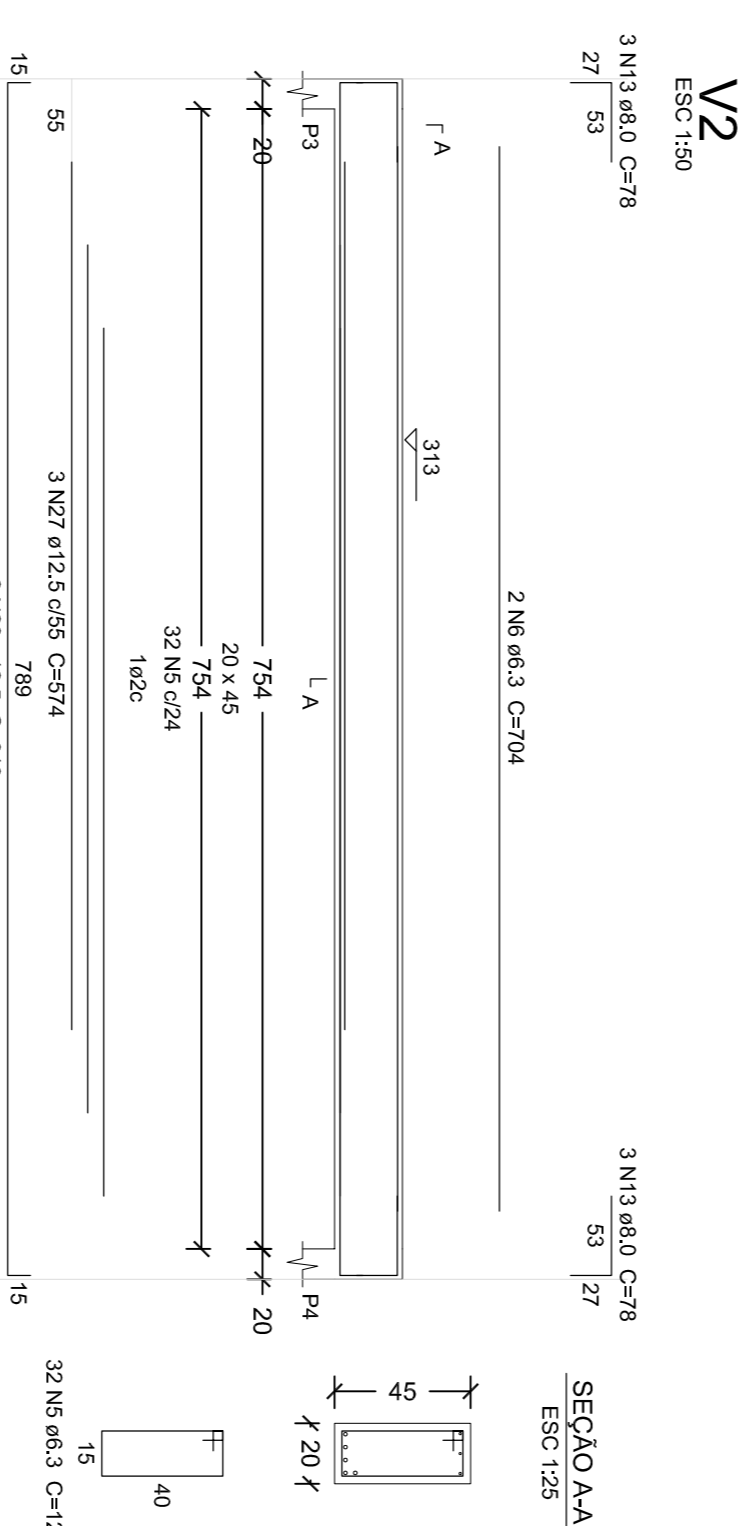
ARMAÇÃO POSITIVA DAS LAJES (EIXO Y)
Escala 1:50



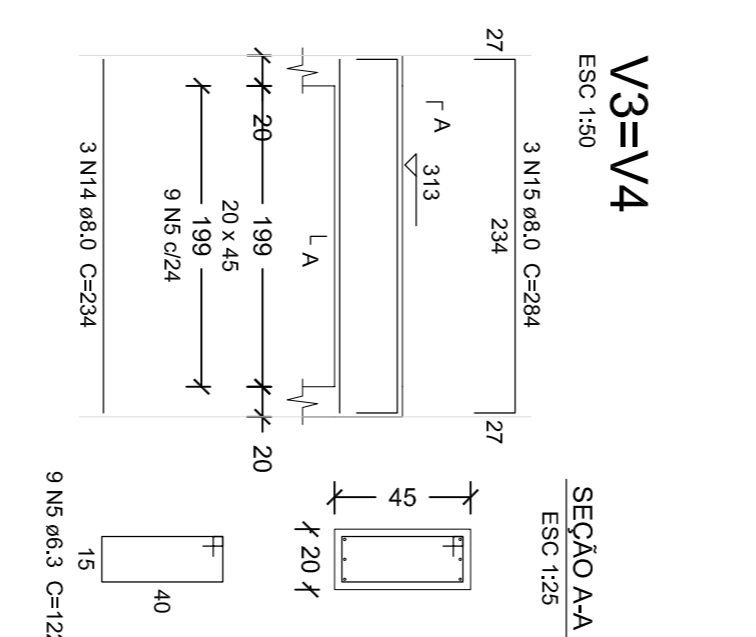
ARMAÇÃO NEGATIVA DAS LAJES (EIXOS X E Y)
Escala 1:50



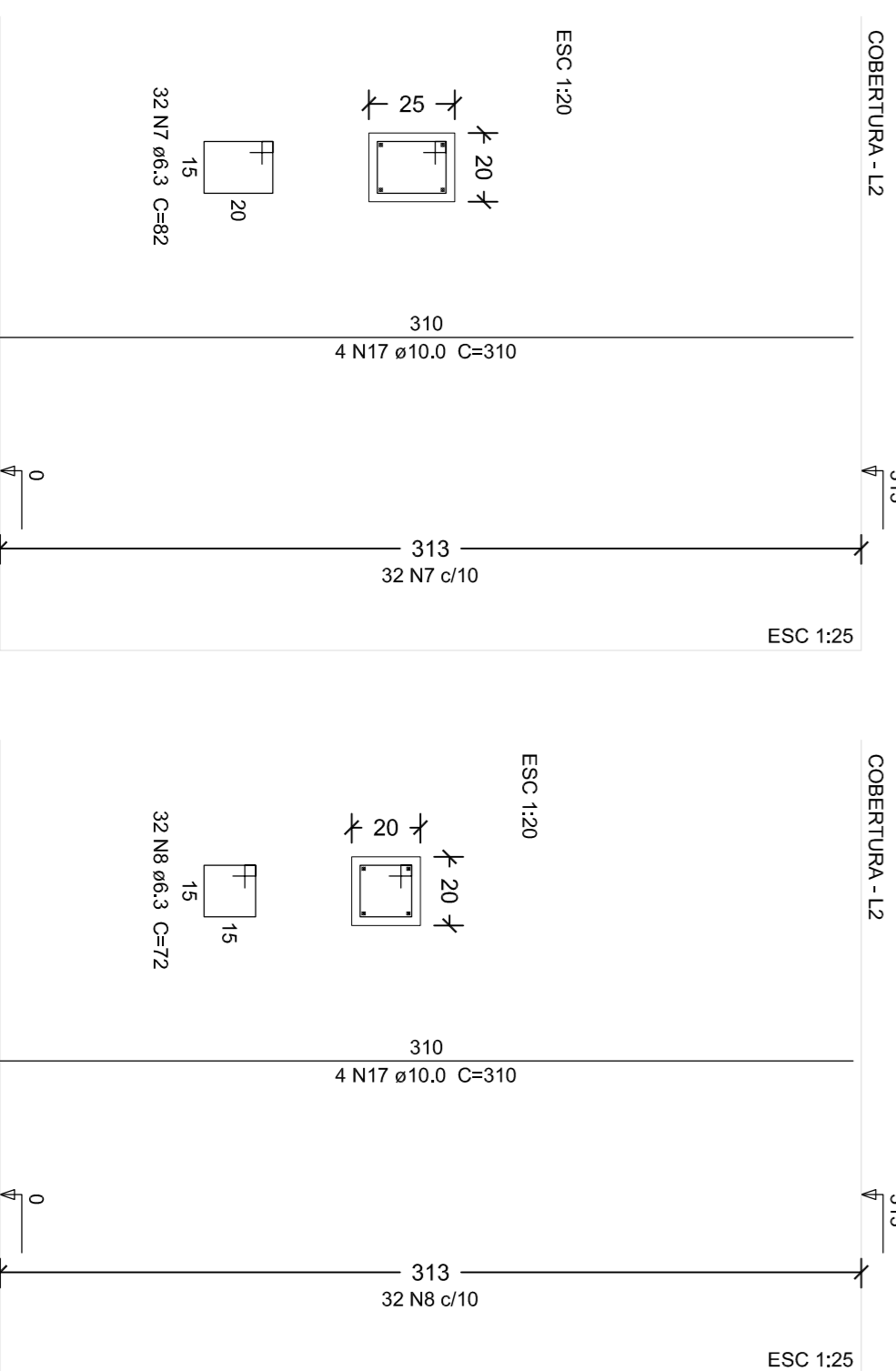
V1
ESC: 1:50



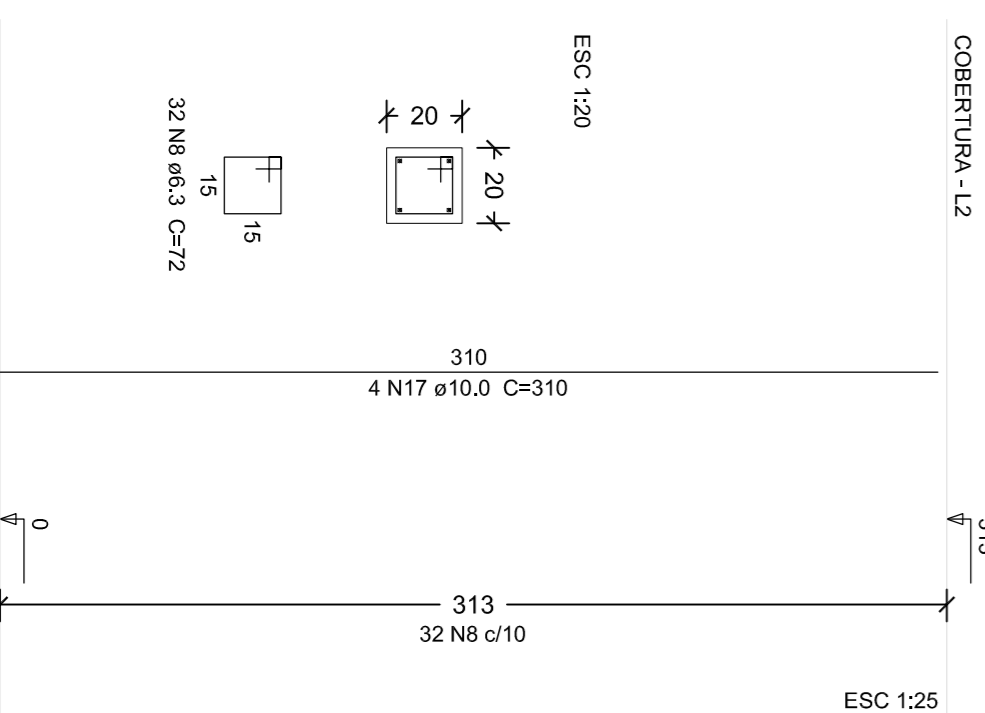
V2
ESC: 1:50



V3=V4
ESC: 1:50



P1=P2
ESC: 1:25



P3=P4
ESC: 1:25

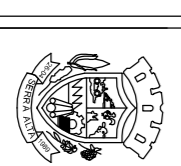
Relação do aço

CASO	N	DIAM (mm)	QUANT (Barras)	UNIT (cm)	C.TOTAL (cm)
CASO 0	1	5,0	24	219	5226
	2	5,0	24	219	5226
	3	5,0	24	219	5226
CASO 1	1	5,0	24	219	5226
	2	5,0	24	219	5226
	3	5,0	24	219	5226
	4	5,0	24	219	5226
	5	6,3	81	122	9882
	6	6,3	81	122	9882
	7	6,3	82	704	1408
	8	6,3	84	82	5248
	9	6,3	84	72	4608
	10	6,3	84	371	2988
CASO 2	1	6,3	38	234	8892
	2	6,3	38	234	8892
	3	6,3	38	234	8892
	4	6,3	38	234	8892
	5	8,0	6	130	780
	6	8,0	6	78	488
	7	8,0	6	234	1404
	8	8,0	6	284	1704
	9	8,0	39	230	8970
	10	8,0	11	135	1080
CASO 3	1	10,0	11	135	1485
	2	10,0	11	135	1485
	3	10,0	11	135	1485
	4	10,0	11	135	1485
	5	12,5	27	574	1722
	6	12,5	27	574	1722
	7	12,5	27	574	1722
	8	12,5	27	574	1722
	9	12,5	27	574	1722
	10	12,5	27	574	1722
CASO 4	1	15,0	2	584	1128
	2	15,0	2	584	1128
CASO 5	1	15,0	2	584	1128
	2	15,0	2	584	1128

Resumo do aço

CASO	DIAM (mm)	C.TOTAL (cm)	PREÇO + 10 % (R\$)
CASO 0	5,0	102,4	57,8
CASO 1	6,3	133,3	75,5
CASO 2	6,3	382,1	245,6
CASO 3	12,5	33,5	35,5
CASO 4	15,0	27,1	47
CASO 5	15,0	190,3	32,3
PREÇO TOTAL (R\$)			522,3

Volume de concreto (C-25) = 6,02 m³
Aço de forma = 62,11 m



PREFEITURA MUNICIPAL DE SERRA ALTA

AMPLIAÇÃO CRECHÊ

Rua Sale de Salenbro, Serra Alta-Sc

Engenheiro Civil
CREMASC 133.030/7

MUNICÍPIO DE SERRA ALTA
CNPJ: 80.622.319/0001-98

04
04