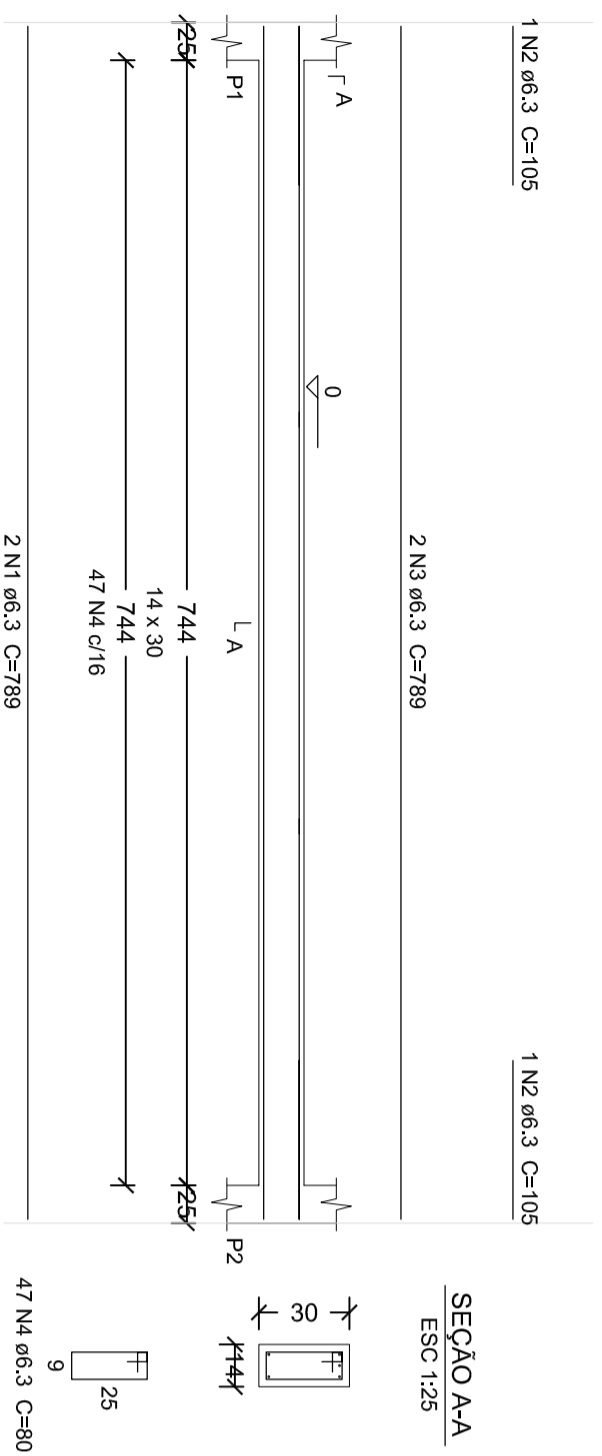
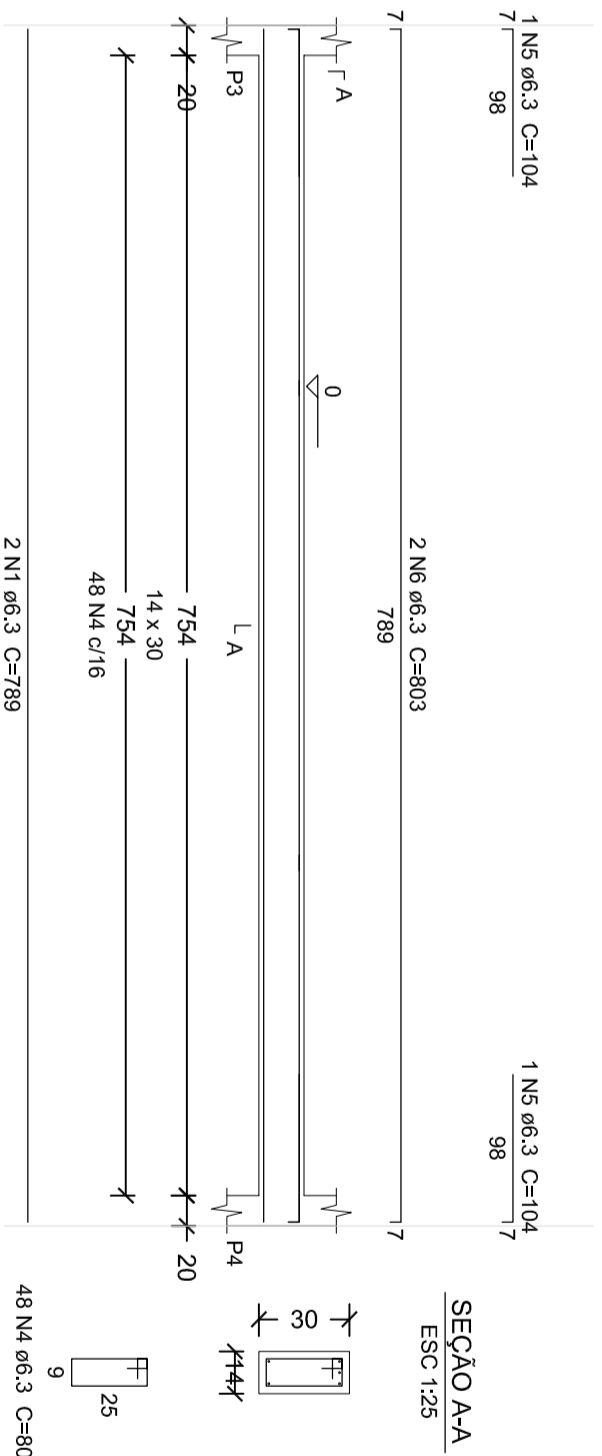


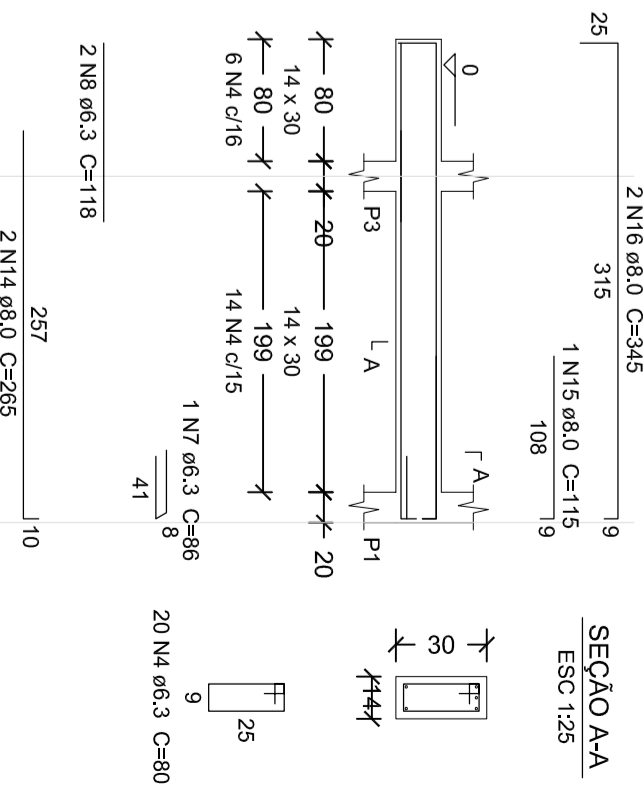
VB1
ESC 1:50



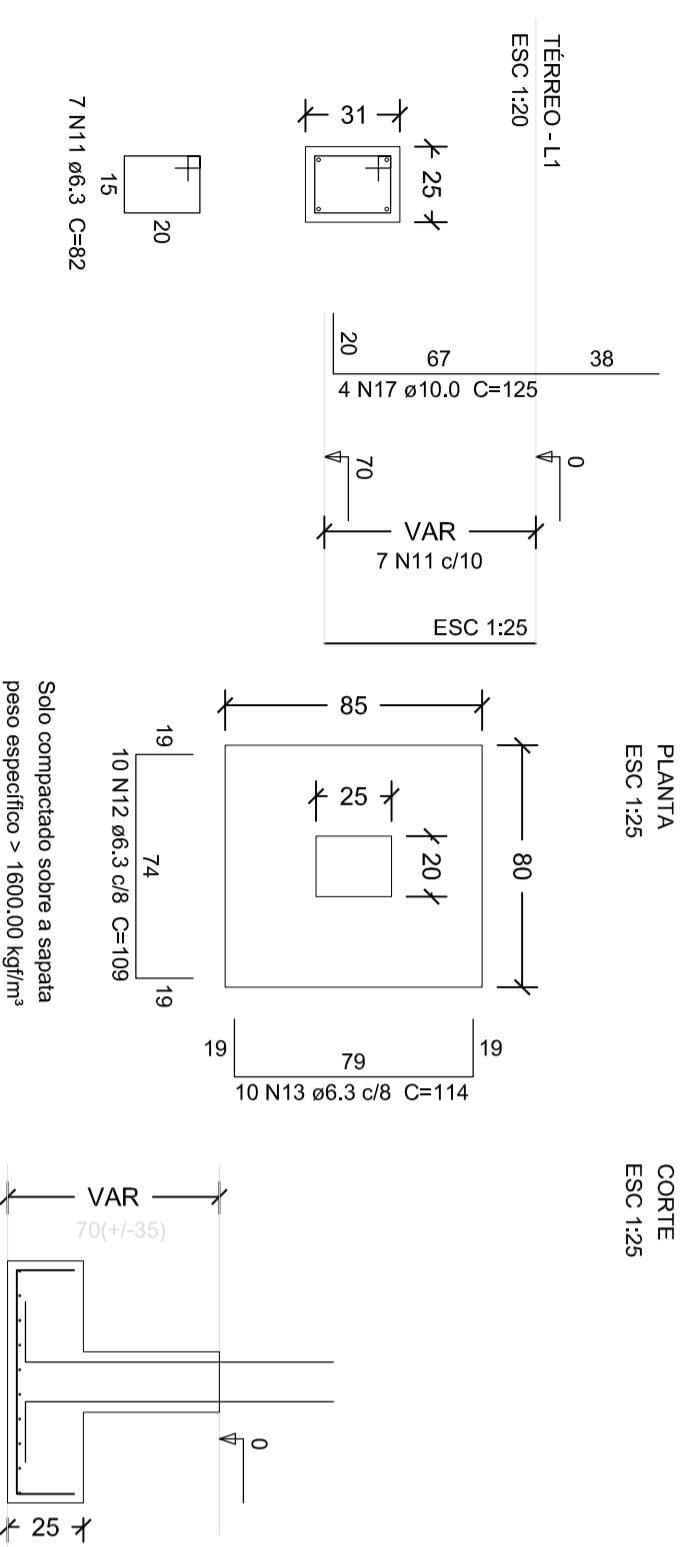
VB2
ESC 1:50



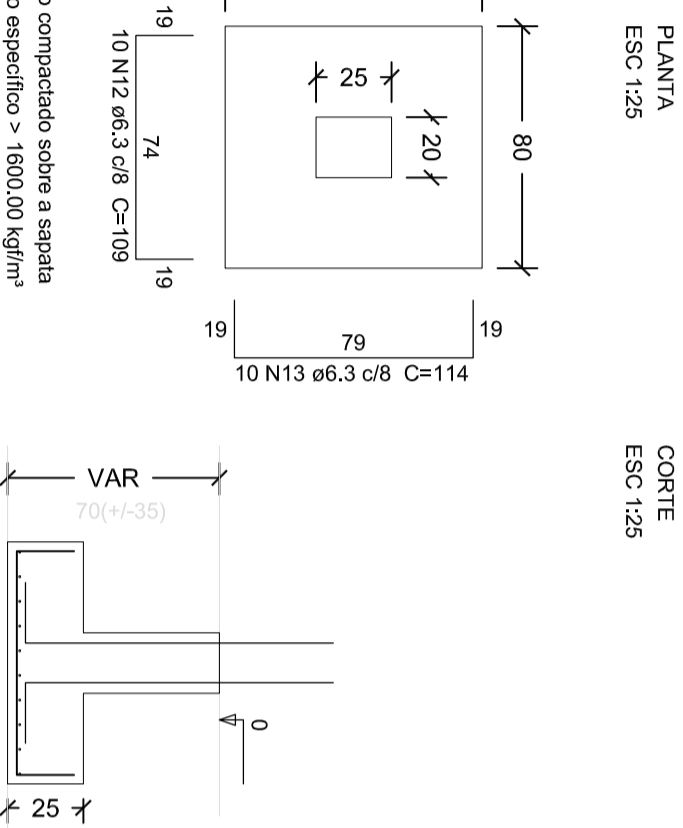
VB3=VB4
ESC 1:50



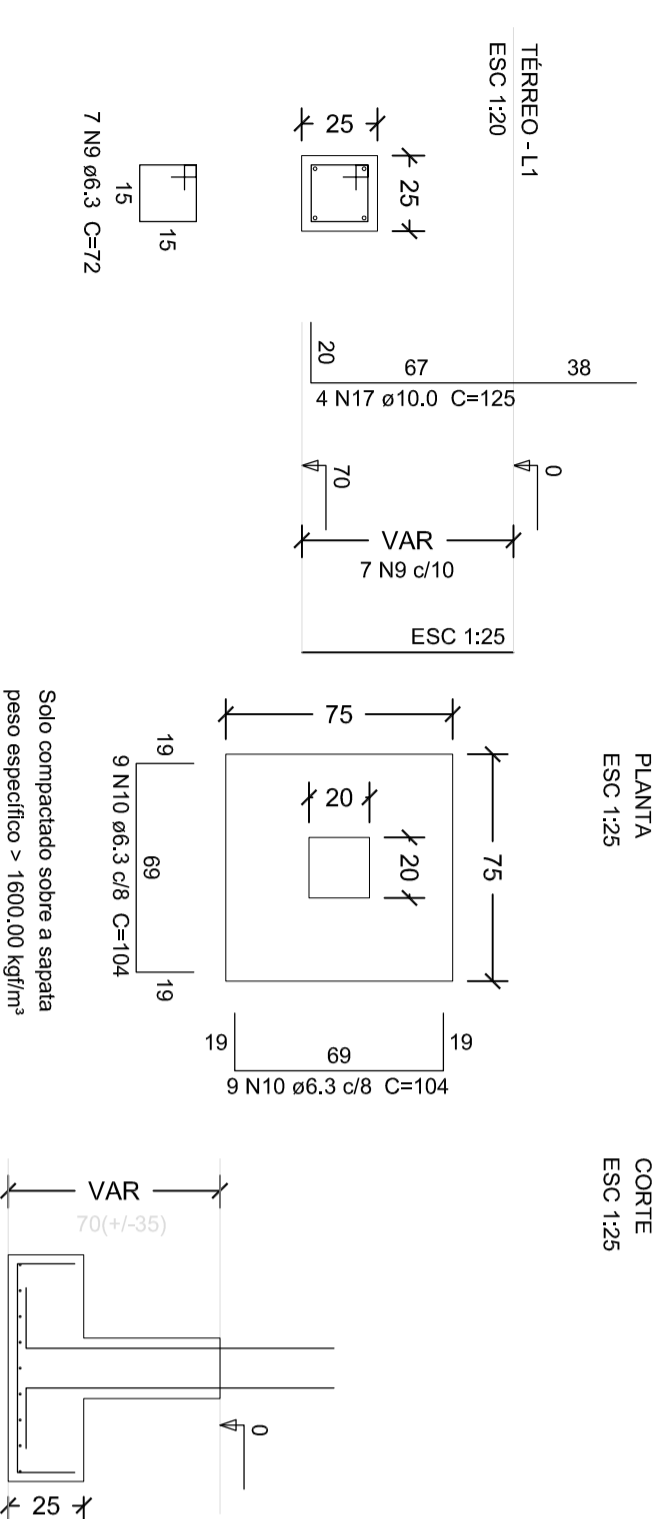
P1=P2



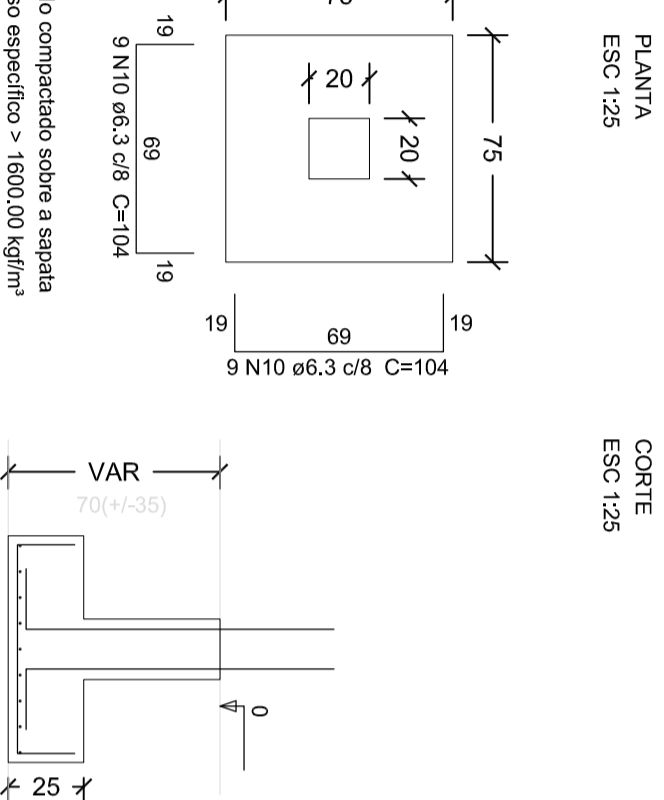
S1=S2



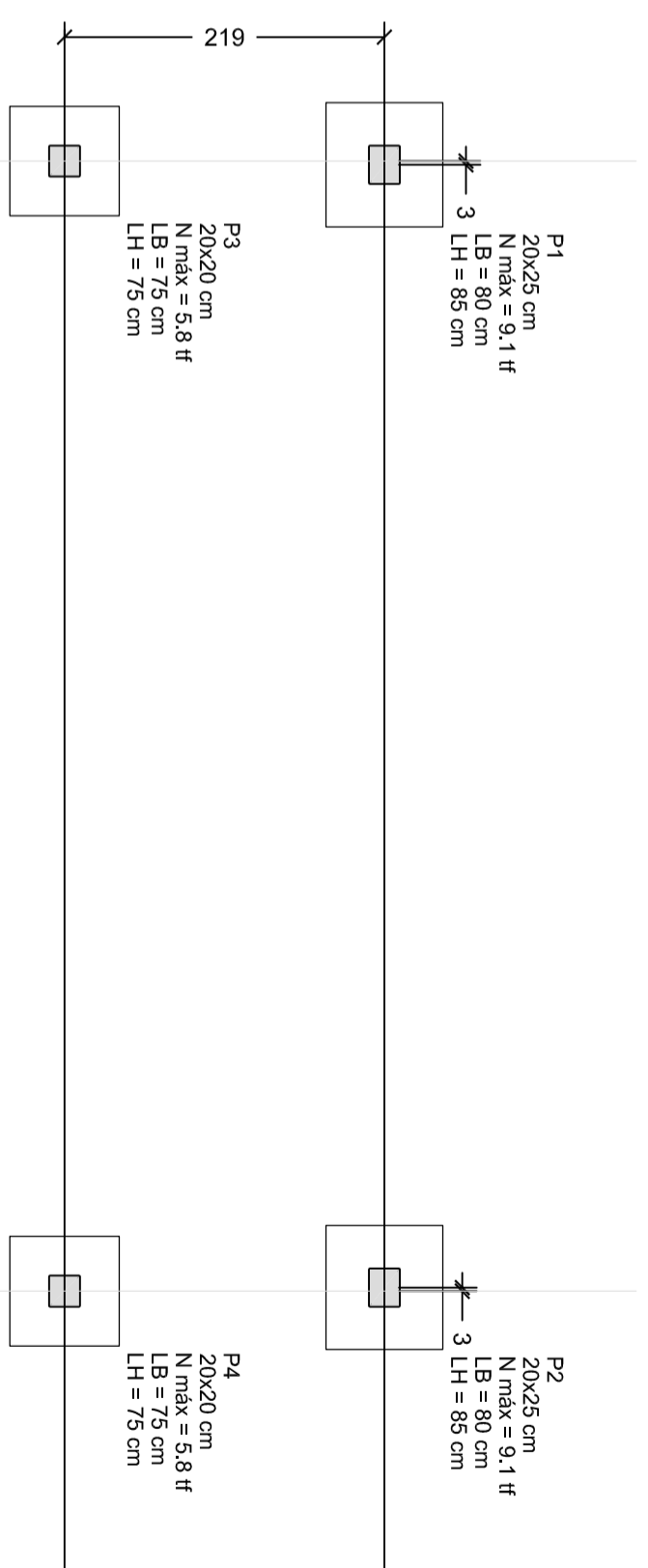
P3=P4



S3=S4



PLANTA DE LOCAÇÃO
Escala 1:50



Nome	Seção (cm)	Pilar	Carga Máx. (tf)	Carga Mín. (tf)	Lado B (cm)	Lado H (cm)
P1	20x25		9,1	5,8	80	85
P2	20x25		9,1	5,8	80	85
P3	20x20		5,8	3,6	75	75
P4	20x20		5,8	3,6	75	75

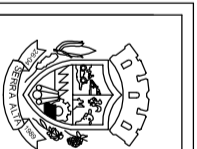
Relação do aço

ACO	N	DIAM (mm)	QUANT (Barras)	UNIT (cm)	C:TOTAL (cm)
CA50	1	6,3	4	789	3156
	2	6,3	2	105	210
	3	6,3	2	789	1578
	4	6,3	135	80	10800
	5	6,3	2	104	208
	6	6,3	2	803	1606
	7	6,3	2	86	172
	8	6,3	4	118	472
	9	6,3	14	72	1008
	10	6,3	36	104	3744
	11	6,3	14	82	1148
	12	6,3	20	109	2180
	13	6,3	20	114	2280
	14	8,0	4	285	1060
	15	8,0	2	115	230
	16	8,0	4	345	1380
	17	10,0	16	125	2000

Resumo do aço

ACO	DIAM (mm)	C:TOTAL (m)	PESO + 10% (kg)
CA50	6,3	286,4	77,1
	8,0	26,7	11,6
	10,0	20,2	13,7
PESO TOTAL			102,4

Volume de concreto (C-25) = 1,68 m³
Área de forma = 22,01 m²



PREFEITURA MUNICIPAL DE SERRA ALTA

OBRA: AMPLIAÇÃO CRECHE

ENDEREÇO: Rua São de Salembro, Serra Alta-Sc

DESCRIÇÃO:

Estrutural
Locação da fundação
Vigas Baldrame
Sapatas

ÁREA: 25,44 m²

DATA: Nov / 2015

ESCALA: Indicada

RESPONSÁVEL TÉCNICO:

REGINA FRIEDRICH
Engenheira Civil
CRENSC 133.450-7

PROPRIETÁRIO:

MUNICÍPIO DE SERRA ALTA
CNPJ: 80.622.319/0001-98

ARQUIVO: Ampliação_berganio.dwg

FRANQUIA:

03
04