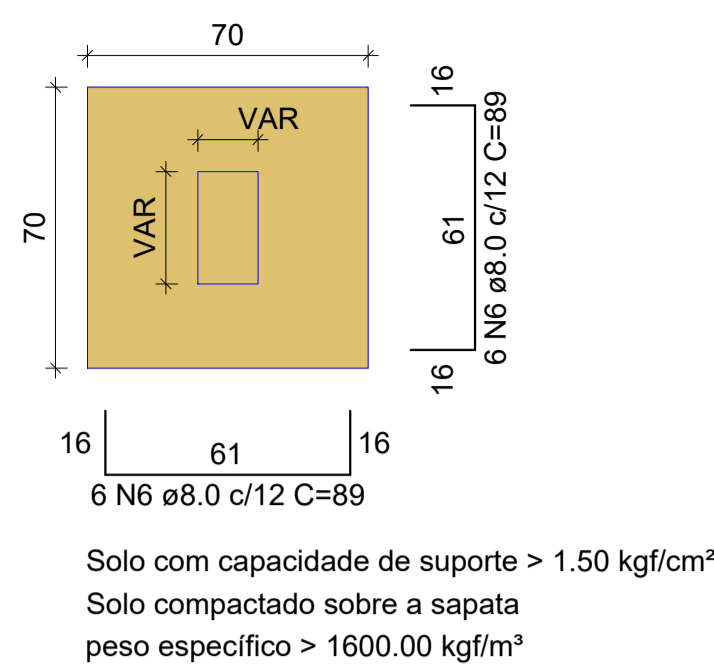
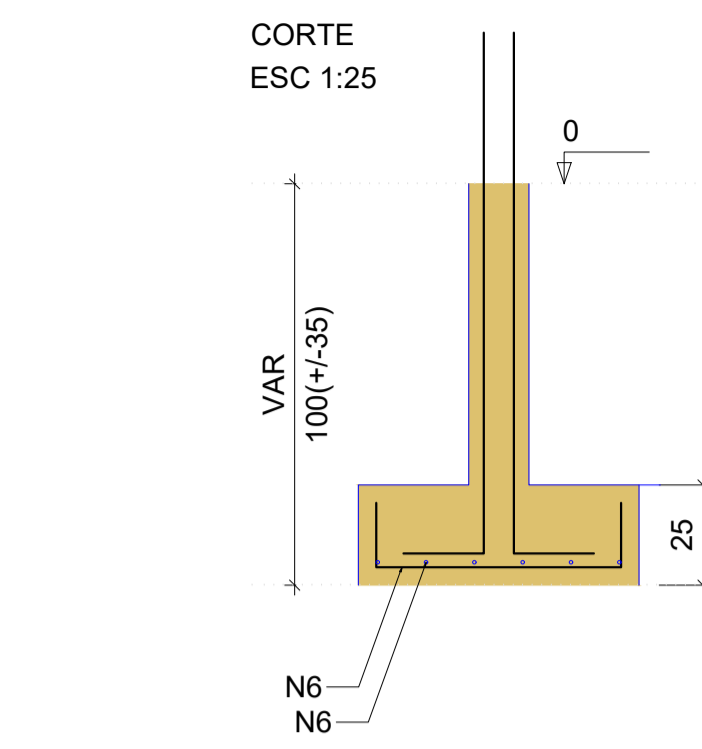


S1=S2=S5=S6=S7=S8=S9=S10=S11=S12

PLANTA  
ESC 1:25



CORTE  
ESC 1:25



P1=P2=P5=P6=P7=P8=P9=P11

VISTA H  
ESC 1:25

VISTA B  
ESC 1:25

BALDRAME - L1

SEÇÃO  
ESC 1:20

VISTA H

VISTA B

7 N1 ø5.0 C=73 2x3 N2 ø5.0 C=52

15  
28  
9  
22  
9  
22

0

38

4 N39 ø10.0 C=152

96

75

7 N1 c/12 2x3 N2 c/12

25

20

-100

P10

VISTA H  
ESC 1:25

VISTA B  
ESC 1:25

BALDRAME - L1

SEÇÃO  
ESC 1:20

VISTA H

VISTA B

7 N3 ø5.0 C=61 2x3 N4 ø5.0 C=48

15  
25  
10  
20  
10  
20

0

38

4 N39 ø10.0 C=152

96

75

7 N3 c/12 2x3 N4 c/12

25

20

-100

P10

VISTA H  
ESC 1:25

VISTA B  
ESC 1:25

TÉRREO - L2

SEÇÃO  
ESC 1:20

VISTA H

VISTA B

22 N3 ø5.0 C=61

25  
15  
10  
20  
10  
20

22 N3 ø5.0 C=61

25

22 N3 c/12

255

2x3 N4 ø5.0 C=48

277

4 N38 ø10.0 C=267

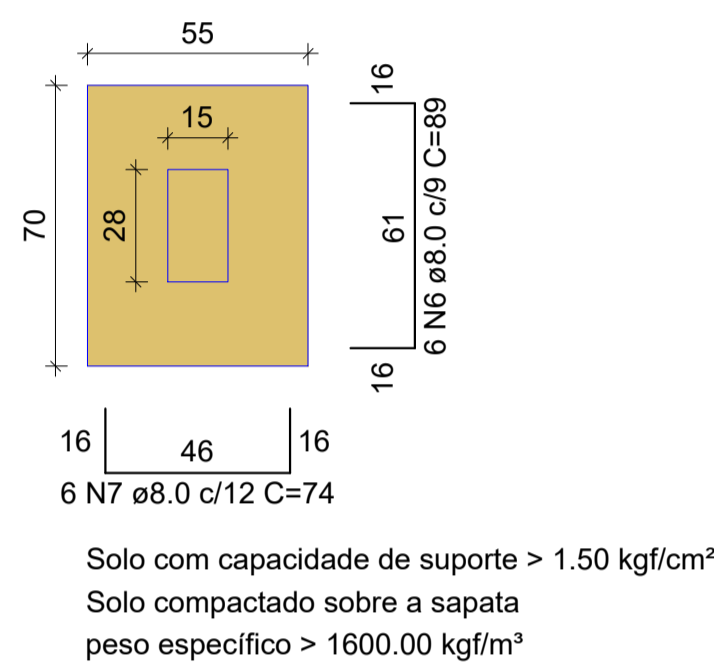
25

2x3 N4 c/12

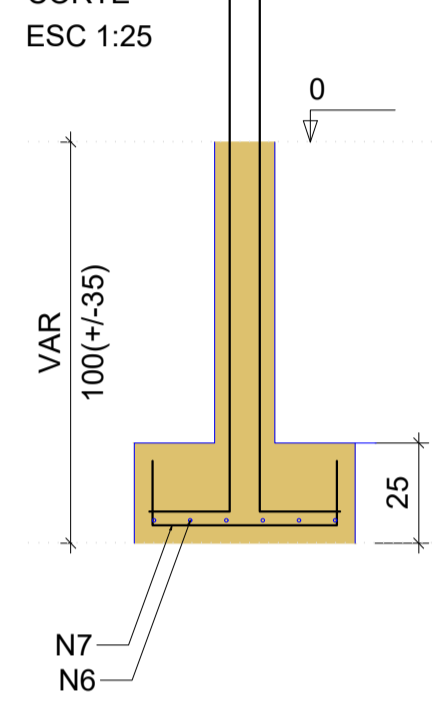
0

S3=S4

PLANTA  
ESC 1:25



CORTE  
ESC 1:25



P3=P4

VISTA H  
ESC 1:25

VISTA B  
ESC 1:25

BALDRAME - L1

SEÇÃO  
ESC 1:20

VISTA H

VISTA B

7 N1 ø5.0 C=73 2x3 N2 ø5.0 C=52

15  
28  
9  
22  
9  
22

0

38

4 N39 ø10.0 C=152

96

75

7 N1 c/12 2x3 N2 c/12

25

20

-100

P12

VISTA H  
ESC 1:25

VISTA B  
ESC 1:25

BALDRAME - L1

SEÇÃO  
ESC 1:20

VISTA H

VISTA B

7 N1 ø5.0 C=73 2x3 N2 ø5.0 C=52

15  
28  
9  
22  
9  
22

0

38

6 N39 ø10.0 C=152

96

75

7 N1 c/12 2x3 N2 c/12

25

20

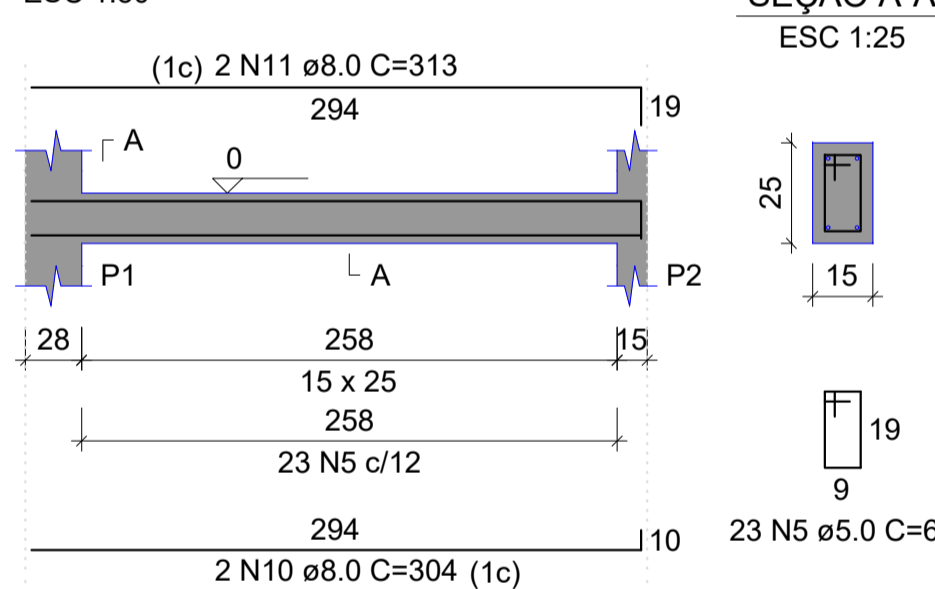
-100

## Sapatas/arranque de pilares

## Pilares

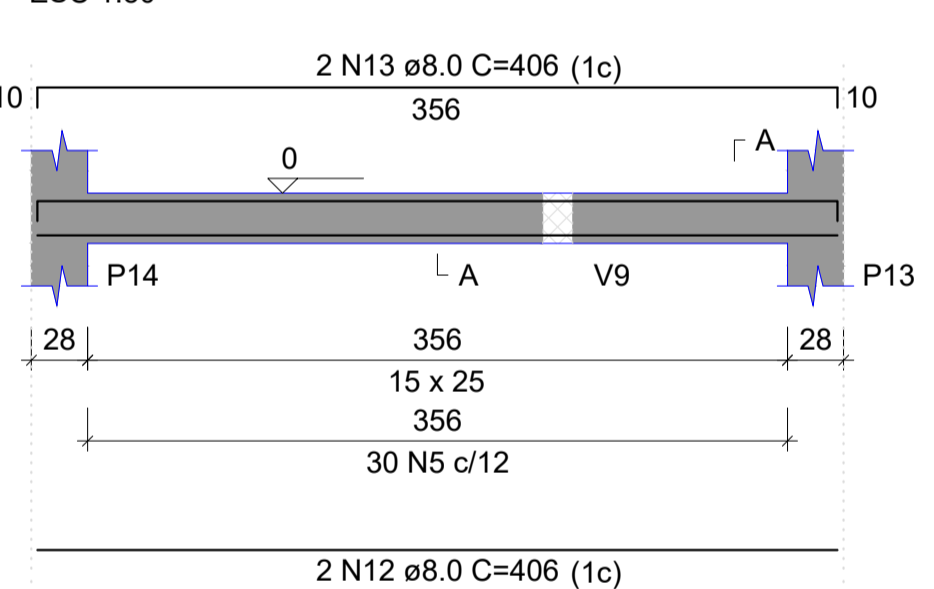
V1

ESC 1:50



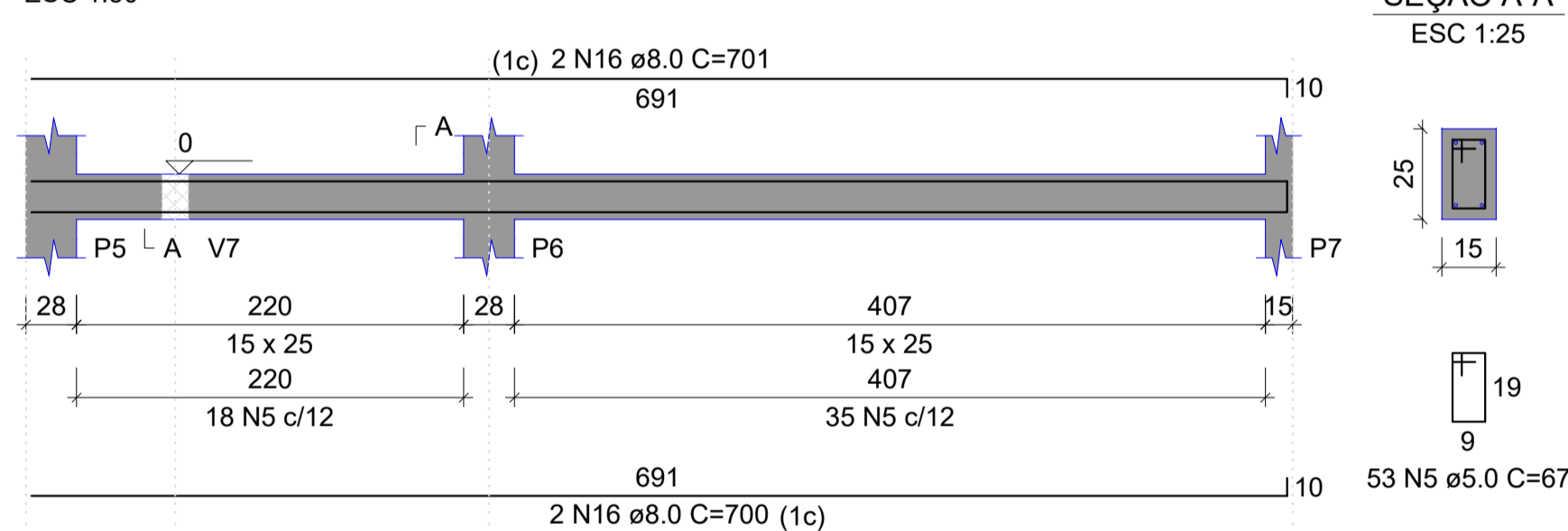
V2

ESC 1:50



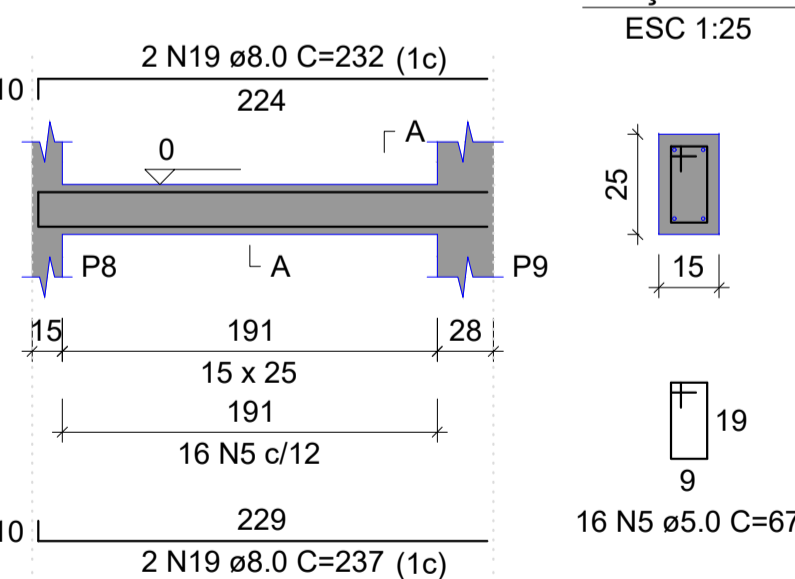
V3

ESC 1:50



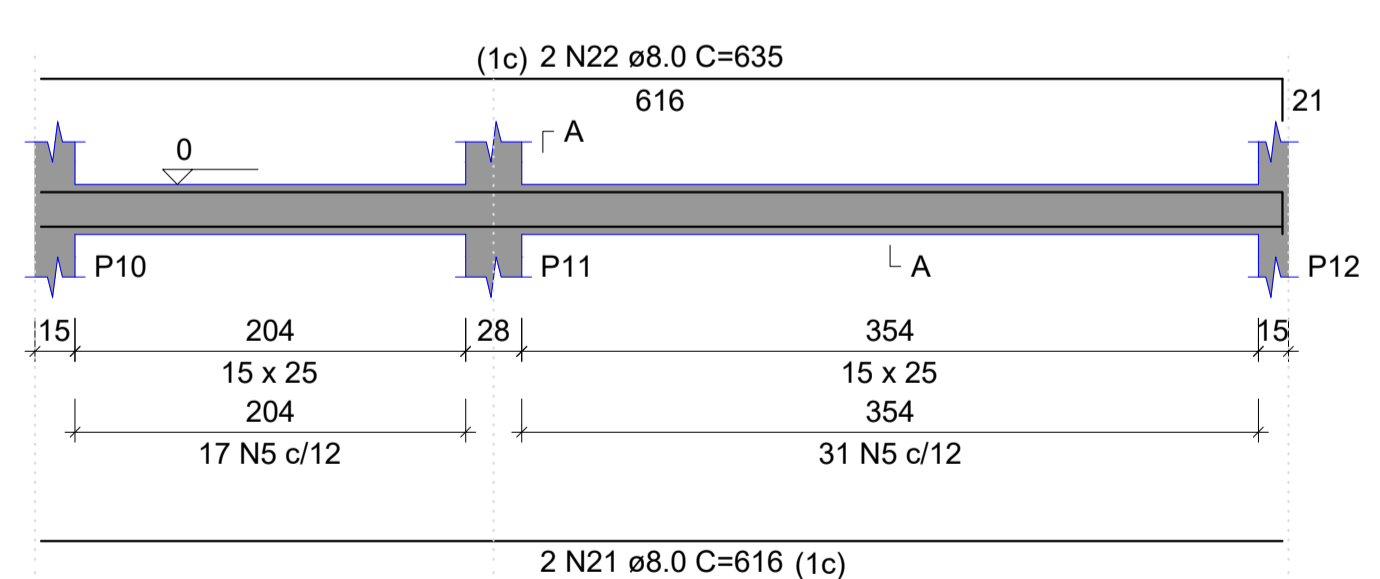
V4

ESC 1:50



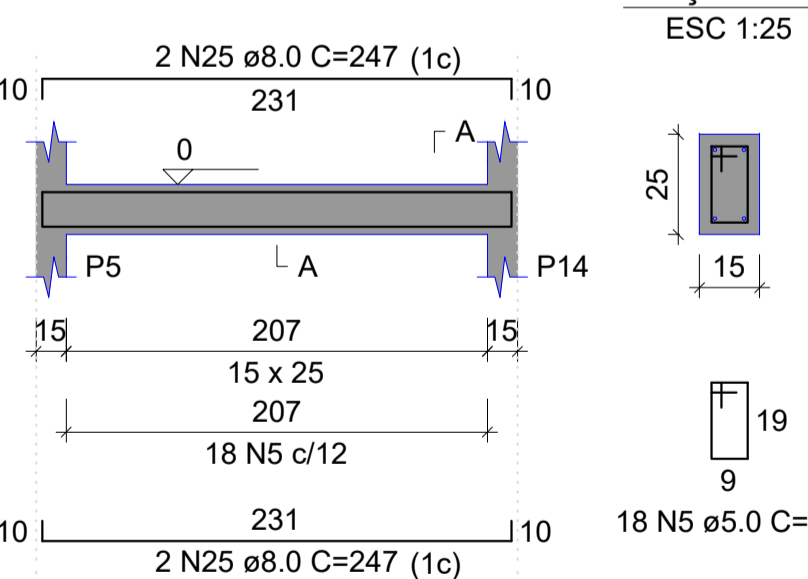
V5

ESC 1:50



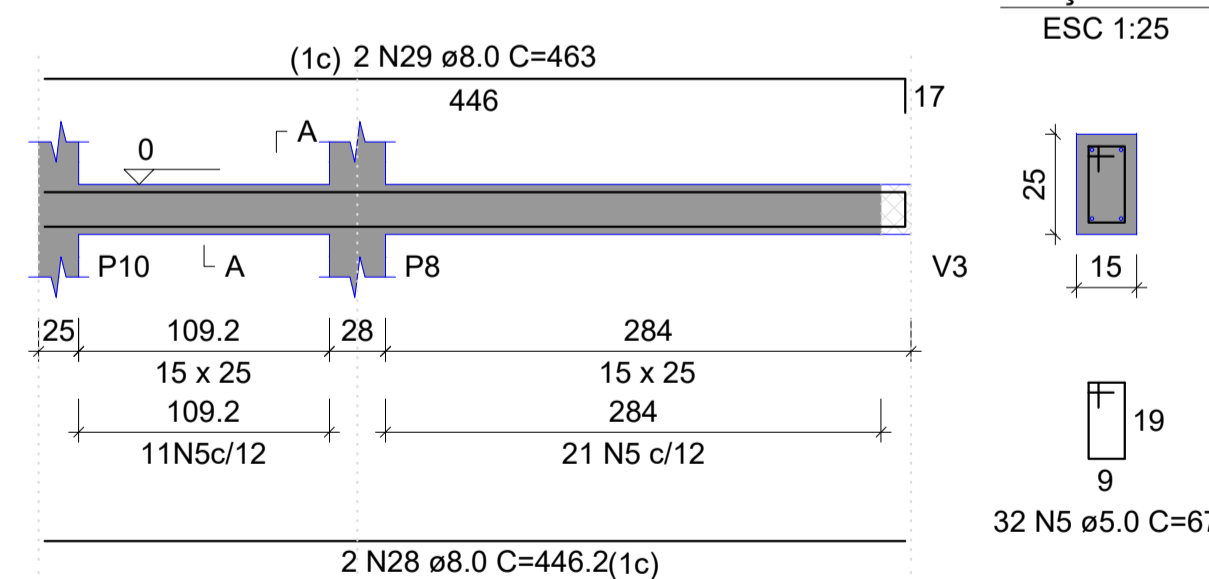
V6

ESC 1:50



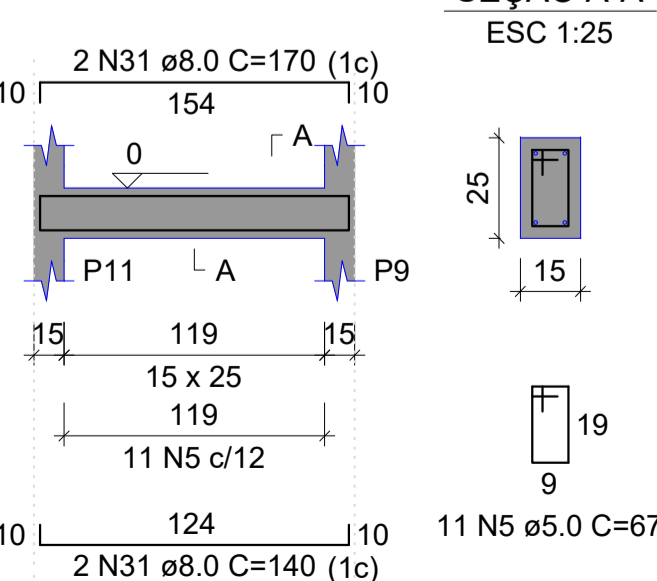
V7

ESC 1:50



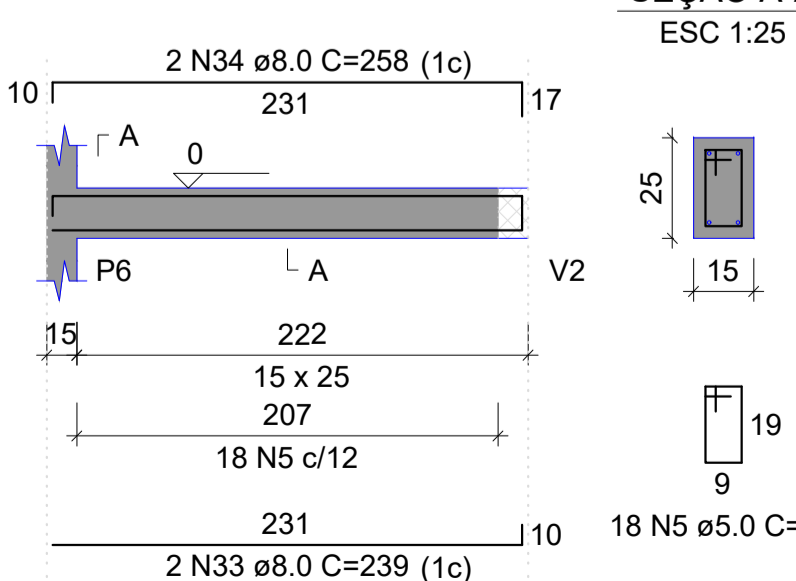
V8

ESC 1:50



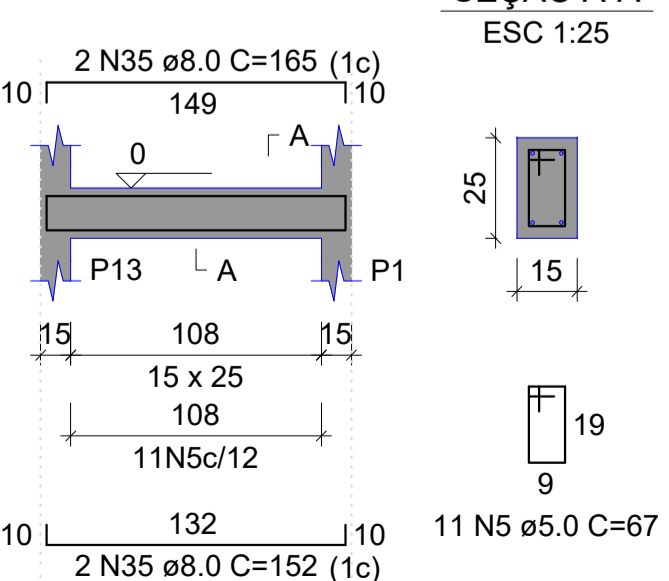
V9

ESC 1:50



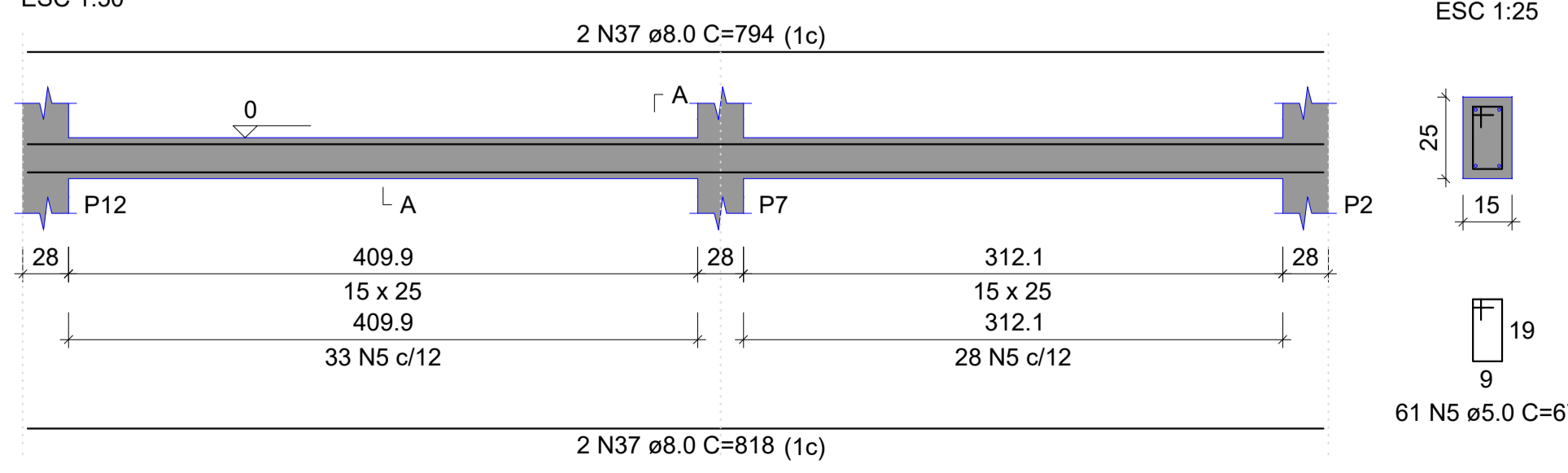
V10

ESC 1:50



V11

ESC 1:50



## Vigas Baldrame

 <b>MUNICÍPIO DE SERRA ALTA</b>		(049) 3364-0076
DESCRIÇÃO: RESIDÊNCIA UNIFAMILIAR POPULAR - Projeto padrão		ESCALA: INDICADA
ENDEREÇO DA OBRA: Rua Vitório Cerezolli, Q91- Serra Alta-SC		DATA: Maio/2020
CONTÉUDO: Estrutural	Nº DO PROJETO: 01	ÁREA: 47,72m <sup>2</sup>
RESPONSÁVEL TÉCNICO PELO PROJETO:	PRANCHA: 02/03	DESENHISTA: Janaina
Engenheira Civil Janaina Sehnem CREA/SC 134.483-1		ARQUIVO: Proposta01_pref.