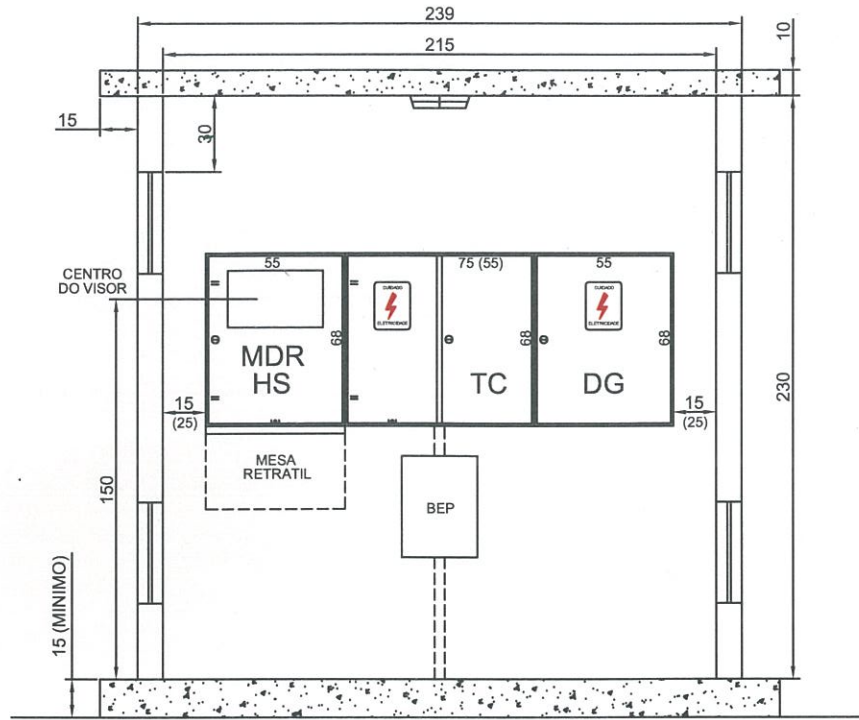
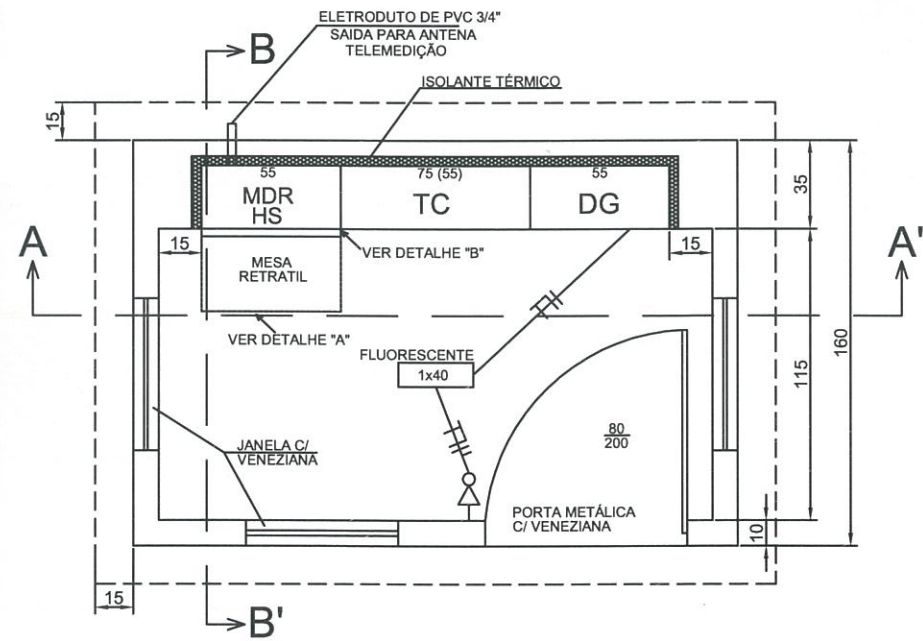


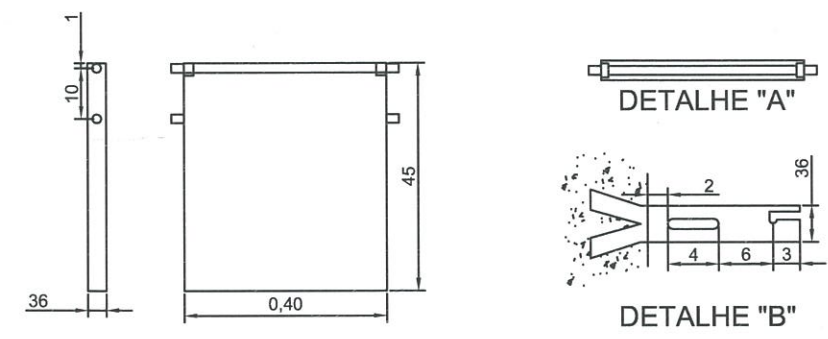
CORTE B-B'



CORTE A-A'



PLANTA BAIXA



Auri Robison Avila
ENGENHEIRO ELETRECISTA - Crea/SC 108.835-7

Auri Robison Avila
Auri Robison Avila
Eng. Eletricista
CREA: 108835-7

PROPRIETÁRIO	MUNICIPIO DE SERRA ALTA		
PROJETO:	PROJETO SUBESTAÇÃO TRANSF. 112,5KVA		
LOCAL:	SC - 160, AREA INDUSTRIAL, SERRA ALTA - SC		
Prancha 05A	ESCALA: Indicada	DATA:	08/05/2017